

5 YEAR
WARRANTY



WHATCAR?

**CAR OF
THE YEAR
AWARDS
2023**

Small electric car
Best to drive
CUPRA Born

CUPRA BORN

MODEL, SPECIFICATION AND PRICES





CONTENTS





THE CUPRA BORN

*100% ELECTRIC. THE IMPULSE OF A
NEW GENERATION.*

*EXCELLENT PERFORMANCE, EXTREMELY
SUSTAINABLE, AND INCREDIBLY
INNOVATIVE, WELCOME TO THE
FIRST-EVER ALL-ELECTRIC CUPRA.*

SELECT YOUR TRIM



BORN V1

Manufacturer's Direct Price from £34,125*

KEY SPECIFICATION FOR THE V1 TRIM

Wheels and tyres

- 18" 'Cyclone' alloy wheels**
- 19" 'Typhoon' alloy wheels (e-Boost only)

Interior equipment

- Interior ambient lighting

Exterior equipment

- LED headlights with welcome home function and adverse weather function
- LED tail lights
- Rain sensing wipers

Infotainment

- 12" Navigation system
- 5.3" Digital Cockpit
- CUPRA Connect: Safety and Service, Remote Access and Online Infotainment
- Safety & Service: 10 year subscription included:
 - Emergency call
 - Breakdown call
 - Service scheduling
- Remote Access: 3 year subscription included:
 - Battery charge
 - Remote climatization
 - Remote profiles and timers
 - Online Infotainment
 - Online traffic information
 - Online map update
 - Online route calculation

- Dynamic POI
- Online voice assistant
- Wireless Full Link smartphone integration

Seats and trim

- Front sport bucket seats in black SEAQUAL® yarn
- Copper interior detailing
- Front centre armrest

Functional and mechanical

- Rear view camera
- Sport suspension
- Drive Profile Selection (Range, Comfort, Performance, Individual)

Safety and security

- Adaptive cruise control with speed limiter
- Forward collision warning with automatic braking
- Driver Alert System: Tiredness recognition
- Lane assist
- Dynamic road sign display

Charging

- Mode 3 charging cable 32A



Model shown: CUPRA Born V1 204ps in Glacial White



INFORMATION AT YOUR FINGERTIPS VIA THE 5.3" DIGITAL COCKPIT AND 12" CENTRAL DISPLAY INFOTAINMENT SYSTEM

**Stock only. The CUPRA Connect services can be operated only by using available public communication technologies. Please note that due to development of these technologies, especially mobile networks, CUPRA cannot guarantee consistent availability in all countries for the duration of CUPRA Connect services. Possible changes in technology may cause permanent unavailability of them. *All prices shown are MDP (Manufacturer's Direct Price), inclusive of VAT. Sold by CUPRA UK, a trading division of Volkswagen Group United Kingdom Limited. MDP includes: delivery to Agent, number plates, new vehicle registration fee, the first year's Vehicle Excise Duty and VAT (calculated at 20%). CUPRA UK may change the MDP at any time (this includes where there are government changes in regulation and/or legislation). There may be a delay to any MDP prices displaying correctly on our materials.

BORN V2

Manufacturer's Direct Price from £36,045*



Model shown: CUPRA Born V2 in Quasar Grey

*All prices shown are MDP (Manufacturer's Direct Price), inclusive of VAT. Sold by CUPRA UK, a trading division of Volkswagen Group United Kingdom Limited. MDP includes: delivery to Agent, number plates, new vehicle registration fee, the first year's Vehicle Excise Duty and VAT (calculated at 20%). CUPRA UK may change the MDP at any time (this includes where there are government changes in regulation and/or legislation). There may be a delay to any MDP prices displaying correctly on our materials.

IN ADDITION TO THE V1 TRIM

Wheels and tyres

- 19" 'Typhoon' alloy wheels

Interior equipment

- Heated, leather-wrapped multi-function steering wheel with satellite buttons
- Heated front seats

Exterior equipment

- Dark tinted rear windows

Infotainment

- Augmented-reality head-up display



AUGMENTED-REALITY HEAD-UP DISPLAY



BORN V2 EDITION**

Manufacturer's Direct Price from £37,765*



Model shown: V2 Edition in Quasar Grey

IN ADDITION TO THE V2 TRIM

Wheels and tyres

- 19" 'Typhoon' Machined Alloy Wheels in Glossy Black with details in Copper details

Interior equipment

- KESSY advanced with illuminated door handles
- Wireless phone charger
- Car 2X – intelligent vehicle networking

Exterior equipment

- Panoramic sunroof

Infotainment

- BeatsAudio™: (9 speakers, subwoofer, 395W Amplifier and surround technology)



**Stock only. *All prices shown are MDP (Manufacturer's Direct Price), inclusive of VAT. Sold by CUPRA UK, a trading division of Volkswagen Group United Kingdom Limited. MDP includes: delivery to Agent, number plates, new vehicle registration fee, the first year's Vehicle Excise Duty and VAT (calculated at 20%). CUPRA UK may change the MDP at any time (this includes where there are government changes in regulation and/or legislation). There may be a delay to any MDP prices displaying correctly on our materials.

BORN V3

Manufacturer's Direct Price from £37,800*

IN ADDITION TO THE V2 TRIM

Wheels and tyres

- 20" 'Hurricane' machined aerowheels

Seats and trim

- Granite Grey Dinamica® seats:
 - 12 way electrically adjustable front seats
 - Pneumatically adjustable lumbar support
 - Massage function



GRANITE GREY
DINAMICA® SEATS ↓



*All prices shown are MDP (Manufacturer's Direct Price), inclusive of VAT. Sold by CUPRA UK, a trading division of Volkswagen Group United Kingdom Limited. MDP includes: delivery to Agent, number plates, new vehicle registration fee, the first year's Vehicle Excise Duty and VAT (calculated at 20%). CUPRA UK may change the MDP at any time (this includes where there are government changes in regulation and/or legislation). There may be a delay to any MDP prices displaying correctly on our materials.

→
20" 'HURRICANE'
MACHINED AEROWHEELS



BORN V3 EDITION**

Manufacturer's Direct Price from £39,500*

IN ADDITION TO THE V3 TRIM

Wheels and tyres

- 20" Blizzard machines aero-wheels with inserts in Glossy Black and Copper

Interior equipment

- KESSY advanced with illuminated door handles
- Wireless phone charger
- Car 2X – intelligent vehicle networking

Exterior equipment

- Panoramic sunroof

Infotainment

- BeatsAudio™: (9 speakers, subwoofer, 395W Amplifier and surround technology)



Model shown: Born V3 Edition in Aurora Blue

**Stock only. *All prices shown are MDP (Manufacturer's Direct Price), inclusive of VAT. Sold by CUPRA UK, a trading division of Volkswagen Group United Kingdom Limited. MDP includes: delivery to Agent, number plates, new vehicle registration fee, the first year's Vehicle Excise Duty and VAT (calculated at 20%). CUPRA UK may change the MDP at any time (this includes where there are government changes in regulation and/or legislation). There may be a delay to any MDP prices displaying correctly on our materials.



SELECT YOUR BATTERY

	Fuel	WLTP CO ₂ g/km	Insurance Group (1-50)	BIK 2024/25*	Base Price (excl. VAT)	VAT @ 20.0%	Base Price (incl. VAT) (P11D Value)	1st Year RFL Rate 2024/25	Standard RFL	1st Reg Fee 2024/25	MDP (Manufacturer's Direct Price) (incl. VAT)
V3	58 kWh 204PS**	0	25E	2%	£31,454.17	£6,290.83	£37,745.00	£0.00	£180.00	£55.00	£37,800.00
	58 kWh 230PS e-Boost	0	26E	2%	£32,125.00	£6,425.00	£38,550.00	£0.00	£180.00	£55.00	£38,605.00
	V3 Edition 58 kWh 230PS e-Boost**	0	27E	2%	£32,870.83	£6,574.17	£39,445.00	£0.00	£180.00	£55.00	£39,500.00
	77 kWh 230PS e-Boost	0	28E	2%	£34,441.67	£6,888.33	£41,330.00	£0.00	£180.00	£55.00	£41,385.00
V2	58 kWh 204PS**	0	25E	2%	£29,991.67	£5,998.33	£35,990.00	£0.00	£180.00	£55.00	£36,045.00
	58 kWh 230PS e-Boost	0	26E	2%	£30,666.67	£6,133.33	£36,800.00	£0.00	£180.00	£55.00	£36,855.00
	V2 Edition 58 kWh 230PS e-Boost**	0	27E	2%	£31,425.00	£6,285.00	£37,710.00	£0.00	£180.00	£55.00	£37,765.00
	77 kWh 230PS e-Boost**	0	28E	2%	£32,975.00	£6,595.00	£39,570.00	£0.00	£180.00	£55.00	£39,625.00
V1	58 kWh 204PS**	0	25E	2%	£28,391.67	£5,678.33	£34,070.00	£0.00	£180.00	£55.00	£34,125.00
	58 kWh 230PS e-Boost	0	27E	2%	£29,191.67	£5,838.33	£35,030.00	£0.00	£180.00	£55.00	£35,085.00

*BIK value is based on WLTP CO₂ and applicable from 27/02/2024. ** Stock only.

All prices shown are MDP (Manufacturer's Direct Price), inclusive of VAT. Sold by CUPRA UK, a trading division of Volkswagen Group United Kingdom Limited. MDP includes: delivery to Agent, number plates, new vehicle registration fee, the first year's Vehicle Excise Duty and VAT (calculated at 20%). CUPRA UK may change the MDP at any time (this includes where there are government changes in regulation and/or legislation). There may be a delay to any MDP prices displaying correctly on our materials. Figures shown are for comparability purposes; only compare fuel consumption and CO₂ figures with other vehicles tested to the same technical procedures. These figures may not reflect real life driving results, which will depend upon a number of factors including the accessories fitted (post-registration), variations in weather, driving styles and vehicle load. Data correct at 27/02/2024.

Figures quoted are for a range of configurations and are subject to change due to ongoing approvals/changes.

E-BOOST

WHAT IS E-BOOST?

With e-Boost, you'll have a surge of extra power available whenever you need it. By ramping up the already phenomenal output of the CUPRA Born, it gives you a burst of adrenaline-charged performance.

HOW DO I ACTIVATE E-BOOST?

Whenever the impulse takes you, press the satellite button on the right of your steering wheel to unleash an extra 20kW of electrifying power – or choose the e-Boost option in your CUPRA Drive Profile menu. Better yet, simply 'kick down' on the accelerator to trigger e-Boost in the purest, most dynamic way.

WHAT'S INCLUDED WITH E-BOOST?

The e-Boost package includes our CUPRA steering wheel with satellite buttons, designed to put unbridled performance at your fingertips. Just as importantly, it comes with enhanced front brake discs – capable of reining in all that incredible power.

*Based on CUPRA Born V3 77kWh 230PS. For further charging information refer to technical information pages.



RANGE.

Up to 343 miles (combined weighted electrical range-WLTP)*



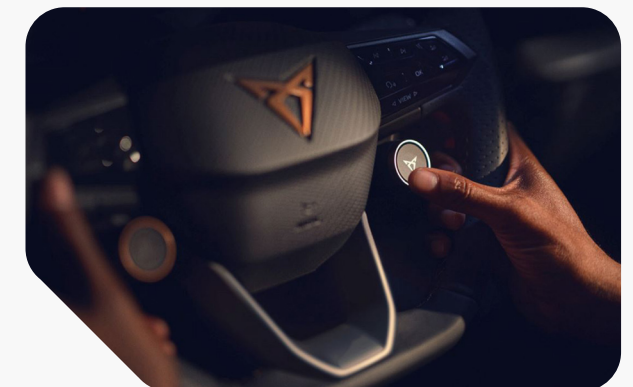
CHARGE.

5-80%:
– 7.5 hours wallbox
< 1hr rapid charge at public charging station*



SPEED.

0-62mph = 7.0 seconds*



CHARGING AT HOME AND ON THE GO

CHARGING AT HOME.

Charging your new CUPRA Born at home is likely to become part of your everyday routine, so we've made it simple.

There are two options for home charging, either via a traditional three-pin plug or a specially installed wallbox (The Mode 3 DC cable is standard equipment). Ohme is CUPRA's recommended supplier to install a wallbox at your home and guide you through the complete home charging journey. Ohme have a range of chargers with features such as smart scheduling to charge your CUPRA when the electricity rates are at their lowest.

KNOW YOUR POWER SUPPLIES.

AC – Alternating Current
DC – Direct Current

WHY DO WE RECOMMEND A WALLBOX IS INSTALLED TO CHARGE YOUR CUPRA BORN?

While a three-pin socket can charge your new CUPRA Born at home, a home wallbox is recommended due to the high energy demands and the significantly faster charge time. A 7.2kW wallbox can charge your CUPRA Born three times faster than with a three-pin plug. A home wallbox installed by an accredited installer like Ohme ensures that your car receives a full night of uninterrupted fast charge.

CHARGING ON THE GO.

While you're out on the road, you can choose from a number of public charging points to top up your new CUPRA Born. Zap Map is a great website (zap-map.com) to locate suitable chargers across the UK.

COMBINED CHARGING SYSTEM (CCS).

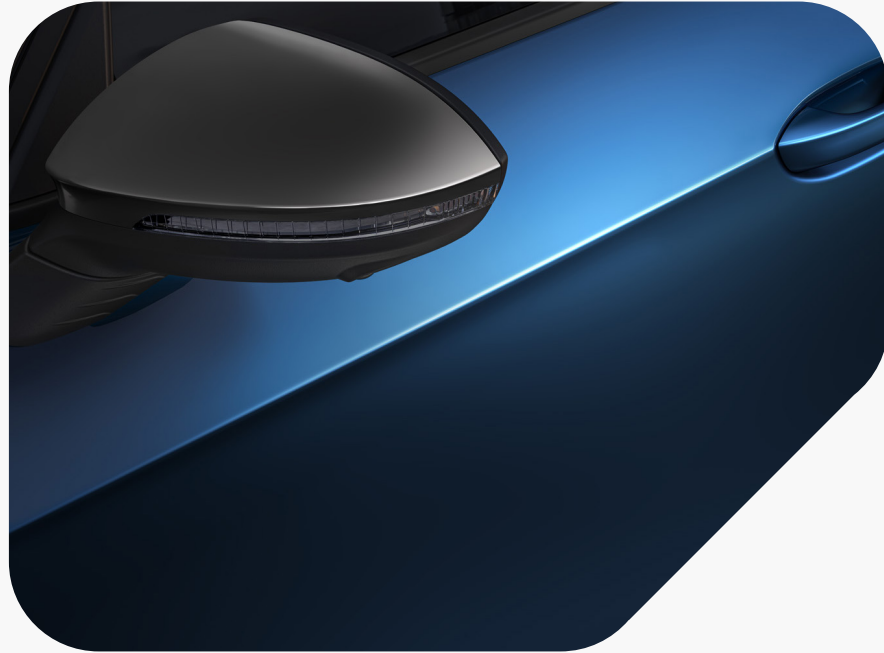
AC & DC rapid charging, is available at most public charging stations. Rapid chargers are the fastest way to charge an EV vehicle and often found in motorway services or in locations close to main roads. The CUPRA Born is equipped with CCS (combined charging system), which supplies high power direct or alternating (DC/AC) to charge a battery to 80% quickly.

REGENERATIVE BRAKING.

This is the recovery of energy usually lost when braking. CUPRA Born optimises braking energy to prolong its battery life and not reduce your range.

SELECT YOUR PAINT COLOUR

PREMIUM METALLIC



Aurora Blue

V1 | V2 | V3 | V2 Edition* | V3 Edition*

METALLIC



Glacial White

V1 | V2 | V3 | V2 Edition* | V3 Edition*



Geyser Silver

V1 | V2 | V3 | V2 Edition* | V3 Edition*



Quasar Grey*

V1 | V2 | V3 | V2 Edition* | V3 Edition*

NON-METALLIC



Rayleigh Red*

V1 | V2 | V3 | V2 Edition* | V3 Edition*



Vapor Grey

V1 | V2 | V3 | V2 Edition* | V3 Edition*

*Stock only.

EQUIPMENT

● Standard ○ Optional – Not available

	V1	V2	V2 EDITION*	V3	V3 EDITION*
WHEELS AND TYRES					
18" 'Cyclone' alloy wheels with 215/55 R18 tyres*	●	–	–	–	–
19" 'Typhoon' machined alloy wheels with 215/50 R19 tyres	● (e-Boost only)	●	–	–	–
19" 'Typhoon' machined Alloy Wheels in Glossy Black with details in Copper with 215/50 R19 tyres	○ (e-Boost only)	○	●	–	–
20" 'Hurricane' machined aerowheels with 215/45 R20 tyres	–	–	–	●	–
20" 'Blizzard' 31/4 machined aero-wheels with inserts in Glossy Black and Copper*	–	–	–	○	●
Tool kit (with tirefit)	●	–	–	–	–
Tool kit	● (e-Boost only)	●	●	●	●
EXTERIOR EQUIPMENT					
Grey exterior mirrors	●	●	●	●	●
Electrically adjustable, folding and heated door mirrors	●	●	●	●	●
Windshield wiper with light / rain sensor	●	●	●	●	●
Heat-insulated glass & acoustic windshield	●	●	●	●	●
Full LED headlights standard for all trims	●	●	●	●	●
Full LED headlights with welcome home function and adverse weather function	●	●	●	●	●
LED rear lights	●	●	●	●	●
Dark tinted rear windows	–	●	●	●	●
Panoramic Sunroof	○	○	●	○	●

*Stock only.

EQUIPMENT

● Standard ○ Optional – Not available

	V1	V2	V2 EDITION*	V3	V3 EDITION*
INFOTAINMENT					
CUPRA Connect: Safety and Service, Remote Access and Online Infotainment					
· Safety & Service: 10 year subscription included: Emergency call, Breakdown call, Service scheduling	●	●	●	●	●
· Remote Access: 3 Year subscription included: Battery charge, Remote climatization, Remote profiles and timers, Online infotainment, Online traffic information, Online map update, Online route calculation, Dynamic POI, Online voice assistant	●	●	●	●	●
Pilot (M):					
- Adaptive cruise control (with follow-to-stop) and speed-limiter	●	●	●	●	●
- Front light assist	●	●	●	●	●
- Navigation system with media & CUPRA Connect with online services	●	●	●	●	●
- Rear view camera system	●	●	●	●	●
- Dynamic road sign display	●	●	●	●	●
Tech (M) including:					
- KESSY advanced with illuminated door handles	○	○	○	○	●
- Wireless phone charger	○	○	○	○	●
- Car 2X – intelligent vehicle networking	○	○	○	○	●
e-Call Service	●	●	●	●	●
7 infotainment speakers	●	●	–	●	–
5.3" Digital Cockpit with 12" central display infotainment system	●	●	●	●	●
BeatsAudio™: (9 speakers, subwoofer, 395W Amplifier and surround technology)	○	○	●	○	●

*Stock only.
The CUPRA Connect services can be operated only by using available public communication technologies. Please note that due to development of these technologies, especially mobile networks, CUPRA cannot guarantee consistent availability in all countries for the duration of CUPRA Connect services.
Possible changes in technology may cause permanent unavailability of them.

EQUIPMENT

● Standard – Not available

	V1	V2	V2 EDITION*	V3	V3 EDITION*
<i>INFOTAINMENT</i>					
Voice assistant	●	●	●	●	●
Augmented-reality Head-up display	–	●	●	●	●
Two front and two rear USB sockets (rear two are charge only)	●	●	●	●	●
Wireless Full Link smartphone integration	●	●	●	●	●
Bluetooth (without wireless charger)	●	●	–	●	–
DAB (Digital Audio Broadcasting) and AM/FM radio	●	●	●	●	●
<i>INTERIOR EQUIPMENT</i>					
Aluminium pedals	●	●	●	●	●
Multi-coloured interior ambient lighting	●	●	●	●	●
Climatronic dual-zone air conditioning	●	●	●	●	●
Electric auxiliary air heater	●	●	●	●	●

*Stock only.

EQUIPMENT

● Standard ○ Optional – Not available

	V1	V2	V2 EDITION*	V3	V3 EDITION*
INTERIOR EQUIPMENT					
Heated, leather-wrapped multi-function steering wheel (non e-Boost)	●	●	–	●	–
Heated, leather-wrapped multi-function steering wheel with satellite buttons (e-Boost only)	●	●	●	●	●
CUPRA emblem on steering wheel	●	●	●	●	●
Keyless-Go central locking system	●	●	●	●	●
Auto-dimming rear view mirror	●	●	●	●	●
SEATS AND TRIM					
SEAQUAL® Yarn seat trim	●	●	●	–	–
Granite Grey Dinamica® front bucket seats; 12 way electrically adjustable, pneumatically adjustable lumbar support and massage function	–	–	–	●	●
Manual height adjustment for front seats	●	●	●	–	–
Unsplit rear seat bench, split folding backrest, without centre armrest (except 77 kWh battery)	●	●	●	–	–
Unsplit rear seat bench, split folding backrest, with centre armrest (77 kWh battery only)	–	●	–	●	–
Lumbar support in seat backrests (V3 only)	–	–	–	●	●
Heated front seats	○	●	●	●	●

*Stock only.

EQUIPMENT

● Standard

	V1	V2	V2 EDITION*	V3	V3 EDITION*
<i>FUNCTIONAL AND MECHANICAL</i>					
Forward collision warning with automatic braking	●	●	●	●	●
Lane assist	●	●	●	●	●
Park distance control in front and rear	●	●	●	●	●
Drive Profile Selection (Range, Comfort, Performance, CUPRA [e-Boost only], Individual)	●	●	●	●	●
Sun visors with illuminated mirror	●	●	●	●	●
Dynamic steering	●	●	●	●	●
Shock absorption in front	●	●	●	●	●
Sports rear shock absorption	●	●	●	●	●

*Stock only.

EQUIPMENT

● Standard

	V1	V2	V2 EDITION*	V3	V3 EDITION*
<i>SAFETY AND SECURITY</i>					
Driver Alert System: Tiredness recognition	●	●	●	●	●
Tyre pressure monitoring system	●	●	●	●	●
Anti-theft alarm system, interior monitoring, backup horn, and towing protection	●	●	●	●	●
3-point seatbelts	●	●	●	●	●
Driver and front passenger airbags with front passenger airbag deactivation, side airbag in front with curtain airbag and interaction airbag in front	●	●	●	●	●
Visual and acoustic seatbelt reminder	●	●	●	●	●
Emergency steering support with turn assist	●	●	●	●	●
Transport protection film	●	●	●	●	●
ISOFIX points in outer rear seats with top tether anchorage points	●	●	●	●	●
Wheel bolts with anti-theft protection	●	●	●	●	●
Extended safety system: proactive passenger protection system	●	●	●	●	●

*Stock only.

EQUIPMENT

● Standard – Not available

	V1	V2	V2 EDITION*	V3	V3 EDITION*
CHARGING TECHNOLOGY					
Gear ratio 11,53 (without e-Boost)	●	●	●	●	●
Gear ratio 12,976 (with e-Boost)	●	●	●	●	●
11 kW AC charging capacity	●	●	●	●	●
Charging cable mode 3, type 2/3, 32 A	●	●	●	●	●
Without charging cable mode 2 (3-pin)	●	●	●	●	●
120 kW DC charging capacity (for 58 kWh battery only)	●	●	●	●	●
170 kW DC charging capacity (for 77 kWh battery only)	–	●	●	●	●

*Stock only.

OPTIONS

● Standard ○ Optional – Not available

		V1	V2	V2 EDITION*	V3	V3 EDITION*	Base Price (excl. VAT)	VAT @20%	Base Price (incl. VAT)
WHEELS & TYRES	19" 'Typhoon' 31/2 machined alloy wheels in Glossy Black with details in Copper including tool kit (without tirefit)**	○	○	●	–	–	£204.17	£40.83	£245.00
	20" 'Blizzard' 31/4 machined aero-wheels with inserts in Glossy Black and Copper including tool kit (without tirefit)*	–	–	–	○	●	£204.17	£40.83	£245.00
	20" 'Firestorm' 31/5 machined alloy wheels in Glossy Black with wider performance tyres and Dynamic Chassis Control**	–	–	–	○	○	£654.17	£130.83	£785.00
	All season tyres 19" + 19" TYPHOON Machined Alloy wheels in Sport Black**	○	○	–	–	–	£125.00	£25.00	£150.00
	All season tyres 19" + 19" TYPHOON Machined Alloy Wheels in Glossy Black with details in Copper**	○	○	–	–	–	£325.00	£65.00	£390.00
SEATS AND TRIM	Aurora Blue Dinamica Bucket Seats	–	–	–	○	○	£162.50	£32.50	£195.00

*Stock only.

**Only available on e-Boost.

OPTIONS

● Standard ○ Optional – Not available

	V1	V2	V2 EDITION*	V3	V3 EDITION*	Base Price (excl. VAT)	VAT @20%	Base Price (incl. VAT)
INTERIOR EQUIPMENT								
Cargo Pack (double boot floor, mode 2 charging cable 2.3kW)	○	○	○	○	○	£283.33	£56.67	£340.00
Dynamic Pack including: Dynamic Chassis Control Suspension (front and rear) Dynamic Chassis Control drive profile	○	○	○	○	○	£691.67	£138.33	£830.00
Heat pump**	○	○	○	○	○	£808.33	£161.67	£970.00
Tech (M) including: KESSY advanced with illuminated door handles, Wireless phone charger, Car 2X – intelligent vehicle networking	○	○	●	○	●	£450.00	£90.00	£540.00
***Tech (L) including: KESSY advanced with illuminated door handles, Wireless phone charger, Car 2X – intelligent vehicle networking, Intelligent park assist, Trained park assist	○	○	–	○	–	£725.00	£145.00	£870.00
***Pilot (L) including: Top view camera, Rear traffic alert and lane change system, Travel assist, Intelligent park assist, Emergency assist, Trained park assist	○	○	○	○	○	£470.83	£94.17	£565.00
BeatsAudio™: (9 speakers, subwoofer, 395W Amplifier and surround technology)**	○	○	●	○	●	£391.67	£78.33	£470.00
Heated front seats	○	●	●	●	●	£325.00	£65.00	£390.00
EXTERIOR EQUIPMENT								
Skyline – Panoramic Sunroof (closed)**	○	○	●	○	●	£808.33	£161.67	£970.00

*Stock only.

**Not available on 77 kWh battery.

***Not available with Pilot (L) / Tech (L).

OPTIONS

● Standard ○ Optional – Not available

	V1	V2	V2 EDITION*	V3	V3 EDITION*	Base Price (excl. VAT)	VAT @20%	Base Price (incl. VAT)
<i>ACCESSORIES</i>								
All-weather floor mats	○	○	○	○	○	£72.92	£14.58	£87.50
Boot luggage compartment tray	○	○	○	○	○	£56.67	£11.33	£68.00
Boot luggage compartment tray – double floor	○	○	○	○	○	£61.67	£12.33	£74.00
CUPRA car cover	○	○	○	○	○	£202.92	£40.58	£243.50
Mudflaps – Front	○	○	○	○	○	£75.00	£15.00	£90.00
Mudflaps – Back	○	○	○	○	○	£75.00	£15.00	£90.00

*Stock only.
 **Not available on 77 kWh battery.
 ***Not available with Pilot (L) / Tech (L).

PAINT & UPHOLSTERY OPTIONS

● Standard ○ Optional – Not available

		V1	V2	V2 EDITION*	V3	V3 EDITION*	Base Price (excl. VAT)	VAT @ 20%	Base Price (incl. VAT)
<i>PAINT</i>	Non-metallic Vapor Grey	○	○	○	○	○	£0.00	£0.00	£0.00
	Metallic Glacial White	○	○	○	○	○	£491.67	£98.33	£590.00
	Metallic Geyser Silver	○	○	○	○	○	£491.67	£98.33	£590.00
	Metallic Quasar Grey*	○	○	○	○	○	£491.67	£98.33	£590.00
	Metallic Rayleigh Red*	○	○	○	○	○	£491.67	£98.33	£590.00
	Premium Metallic Aurora Blue	○	○	○	○	○	£733.33	£146.67	£880.00
<i>UPHOLSTERY</i>	Black SEAQUAL® Yarn	●	●	●	–	–	£0.00	£0.00	£0.00
	Granite Grey Dinamica®	–	–	–	●	●	£0.00	£0.00	£0.00
	Aurora Blue Dinamica®	–	–	–	○	○	£162.50	£32.50	£195.00

*Stock only.



VEHICLE EXCISE DUTY

All new vehicles are subject to a form of Vehicle Excise Duty (VED) based on the type of fuel the vehicle uses and its carbon dioxide (CO₂) emission level, measured in grams per kilometre (g/km). The table below illustrates the duty you will pay based on the DVLA bandings.

The standard rate for Petrol and Diesel is £190 and £180 for Alternative Fuel Vehicles. Please be aware vehicles priced in excess of £40,000 (when combining the MDP (Manufacturer's Direct Price) (incl. VAT) and any additional options you select) will incur an additional £410 a year in vehicle tax for Petrol and Diesel cars, and £410 for Alternative Fuel Cars.

For full details please refer to gov.uk/vehicle-tax-rate-tables

12-MONTH ROAD FUND LICENCE (RFL) RATE FOR PETROL, DIESEL AND ALTERNATIVE FUEL VEHICLES

Cars registered on or after 1 April 2024

CO ₂ g/km	1st year rate Petrol / Diesel	1st year rate Alternative Fuel Vehicles (AFVs)
0	£0	£0
1	£10	£0
51	£30	£20
76	£135	£125
91	£175	£165
101	£195	£185
111	£220	£210
131	£270	£260
151	£680	£670
171	£1,095	£1,085
191	£1,650	£1,640
226	£2,340	£2,330
256	£2,745	£2735

BENEFIT IN KIND TAX

HOW TO CALCULATE YOUR LIABILITY

The BIK percentage value is based on the CO₂ emissions of the vehicle for the current tax year 2024/25.



BIK calculation example: CUPRA Born V1 58 kWh 204PS

P11D value (Manufacturer's Direct Price price less RFL and first registration fee)	£34,125.00
--	------------

WLTP CO ₂ emissions (g/km)	0
---------------------------------------	---

Company car BIK tax based on CO ₂ emission level	2%
---	----

Taxable BIK (for 2024/25 tax year): 2% of £34,125.00	£682.50
---	---------

Annual Company Car Tax 2024/25 (@20% Income Tax)

20% of £682.50	£136.50 per annum
----------------	-------------------

Monthly Company Car Tax 2024/25 (@20% Income Tax)

£136.50 divided by 12	£11.38 per month
-----------------------	------------------



TECHNICAL DATA

58 kWh 204PS* (V1, V2, V3)

58 kWh 230PS (V1, V2, V2 Edition*, V3, V3 Edition*)

77 kWh 230PS (V2*, V3)

BATTERY

Type (cylinders / valves per cylinder)	Permanent magnet synchronous electric motor	Permanent magnet synchronous electric motor	Permanent magnet synchronous electric motor
Maximum power (kW (PS) / rpm) ¹	150 (204) / 4900-8000	170 (231) / 5300-7000	170 (231) / 5300-7000
Maximum torque (Nm / rpm)	310 / 0-4200	310 / 0-5000	310 / 0-5000
Fuel supply system	Li-ion battery	Li-ion battery	Li-ion battery
Fuel type	Electric	Electric	Electric
Emission control	RDE 2	RDE 2	RDE 2

TRANSMISSION

Gearbox type	EQ310-1P	EQ310-1P	EQ310-1P
--------------	----------	----------	----------

PERFORMANCE

Maximum speed (km/h)	160	160	160
Maximum speed (mph) ²	99	99	99
Acceleration 0-62mph (s) (0-100 km/h (s))	7.3	6.6	7.0

*Stock only.

1. The maximum power output figures are quoted in PS (or Pferdestärke, which is the metric equivalent of horsepower). To convert from metric to imperial horsepower, divide the PS by 1.0139.

2. Where law permits.

TECHNICAL DATA

– Not available

	58 kWh 204P* (V1, V2, V3)	58 kWh 230PS (V1, V2, V2 Edition*, V3, V3 Edition*)	77 kWh 230PS (V2*, V3)
BATTERY			
Battery type	Li-ion	Li-ion	Li-ion
Battery voltage (v)	270-459	270-459	240-408
Battery capacity (net / gross) (kw/h)	58 / 62	58 / 62	77 / 82
Battery cells	216	216	288
Charge type (AC/DC)	AC / DC	AC / DC	AC / DC
Charging time AC 11kW 0-100%	6hrs 15 mins	6hrs 15 mins	7hrs 30 mins
Charging time DC 120kW 5-80%	35 mins	35 mins	–
Charging time DC 170kW 5-80%	–	–	30 mins
ELECTRIC CONSUMPTION³ (WLTP)			
Electric consumption combined WLTP (kWh/100km)	15.4-17.3	15.5-17.6	15.7-17.5
Electric range WLTP (km)	426-376	422-373	551-495
Electric range WLTP (miles)	264.7-233.6	262.2-231.8	342.4-307.6
System			
Max power (kW/PS)	150 (204)	170 (231)	170 (231)
Max torque (Nm)	310	310	310

*Stock only.

3. Figures shown are for comparability purposes; only compare fuel consumption and CO₂ figures with other vehicles tested to the same technical procedures. These figures may not reflect real life driving results, which will depend upon a number of factors including the accessories fitted (post-registration), variations in weather, driving styles and vehicle load. Data correct at 27/02/2024.

For full details on fuel consumption, CO₂ figures and VED bands (Vehicle Excise Duty) please see page 21.

Figures quoted are for a range of configurations and are subject to change due to ongoing approvals/changes.

TECHNICAL DATA

	58 kWh 204P* (V1, V2, V3)	58 kWh 230PS (V1, V2, V2 Edition*, V3, V3 Edition*)	77 kWh 230PS (V2*, V3)	
CHASSIS	Front suspension	Independent type McPherson – coil springs – hydraulic dampers – stabilising bar	Independent type McPherson – coil springs – hydraulic dampers – stabilising bar	Independent type McPherson – coil springs – hydraulic dampers – stabilising bar
	Rear suspension	Multilink axle – coil springs – hydraulic dampers – stabilising bar	Multilink axle – coil springs – hydraulic dampers – stabilising bar	Multilink axle – coil springs – hydraulic dampers – stabilising bar
	Steering system	EPS (Electric Power Steering) with variable ratio	EPS (Electric Power Steering) with variable ratio	EPS (Electric Power Steering) with variable ratio
	Turning circle diameter [wall to wall] (m)	10.15	10.15	10.15
BRAKING SYSTEM	Anti-lock Braking System (ABS)	ABS, ESC, electromechanical brake booster and regenerative braking	ABS, ESC, electromechanical brake booster and regenerative braking	ABS, ESC, electromechanical brake booster and regenerative braking
	Type (front / rear)	Ventilated front brakes / drum brakes in rear axle	Ventilated front brakes / drum brakes in rear axle	Ventilated front brakes / drum brakes in rear axle
	Front discs (mm)	330 x 23	340 x 27	340 x 27
	Rear discs (mm)	280	280	280

*Stock only.

TECHNICAL DATA

58 kWh 204P* (V1, V2, V3)

58 kWh 230PS (V1, V2, V2 Edition*, V3, V3 Edition*)

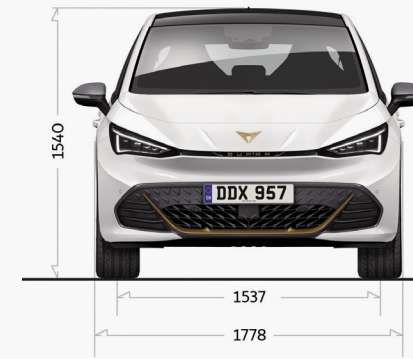
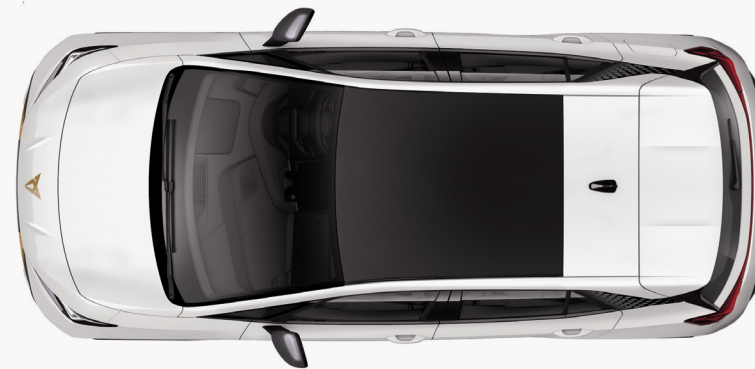
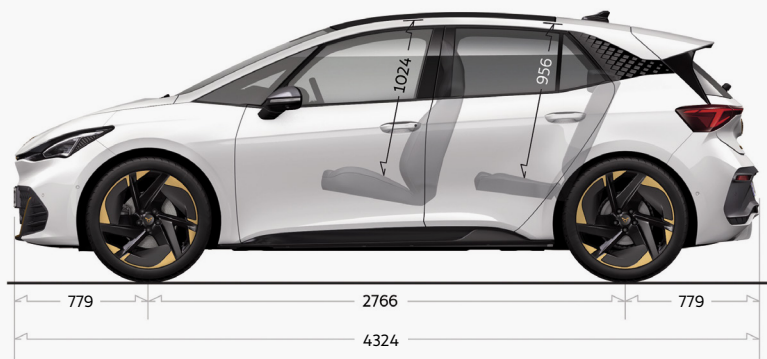
77 kWh 230PS (V2*, V3)

WEIGHTS

Kerb weight [with driver] (kg)	1828	1840	1955
Permissible gross weight (kg)	2280	2290	2320

DIMENSIONS

Boot capacity (l)	385	385	385
Number of seats	5	5	4



*Model with: 215.45 R20 95T

CHARGING

		58kWh	77kWh
<i>BATTERY</i>	Energy (gross)	62 kWh	82 kWh
	Energy (net)	58 kWh	77 kWh
<i>CHARGING TIME (AC)</i>	Charging time AC 2.3 kW 0-100% SOC	29h	37h
	Charging time AC 11 kW 0-100% SOC	6:15h	7:30h
<i>FAST CHARGING (DC)</i>	Charging time DC 50 kW 5-80% SOC	0:53-0:55h	1:10-1:12h
	Charging time DC 100 kW 5-80% SOC	0:35h	-
	Charging time DC 120 kW 5-80% SOC	0:35h	-
	Charging time DC 170 kW 5-80% SOC	-	0:30h
<i>CHARGING TIME 100KM RANGE</i>	Charging time for 100 km with 100 kW charging power (5% / SOC / WLTP)	8 min	-
	Charging time for 100 km with 135 kW charging power (5% / SOC / WLTP)	-	7 min
<i>CHARGING TIME 100KM RANGE</i>	Electric range 5 / 10 / 20 / 30 minutes with 100 kW charging power (15-30 km)	- / - / - / 290 km	-
	Electric range 5 / 10 / 20 / 30 minutes with 135 kW charging power (15-30 km)	-	- / - / - / 350 km

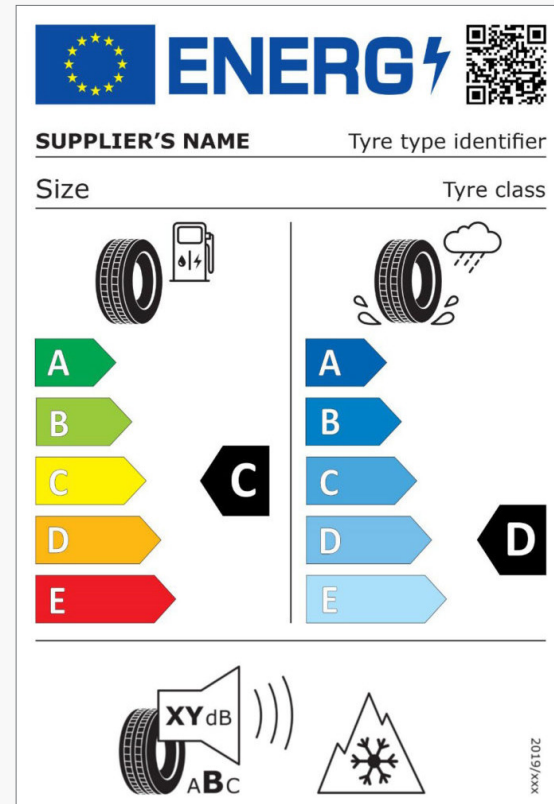
YOUR TYRE LABEL

They may not be the first part of your CUPRA you notice, but your tyres play a vital role in keeping you on the road. Your EU tyre label tells you everything you need to know.

Due to the variation of tyres that may be fitted during production, the **configurator** will show multiple tyre labels. It is not possible to select a specific tyre when ordering a vehicle.



You'll see more in-depth information on your tyres while configuring your car. Click **here** to start building your CUPRA now.



ENERGY EFFICIENCY

This is a measure of 'rolling resistance' – in other words, the amount of energy lost through motion. The lower the rolling resistance, the lower your energy consumption, with tyres rated as class A being the most efficient.

WET GRIP

Rigorous testing ensures your tyres give great handling and performance in all conditions. Wet grip specifically measures how well you can brake in wet conditions, with grade A giving the shortest stopping distance.

EXTERNAL NOISE

Tyres are carefully measured so you know exactly how much noise they'll make while driving. If decibels don't mean a lot to you, don't worry. Each tyre also falls into a noise class-A being the quietest and C the loudest.

WARRANTIES

FIVE-YEAR MANUFACTURER WARRANTY

All new CUPRA's ordered on or after 03/04/2024 in the UK, come with a five year/90,000 miles warranty, which protects your car against the failure of most mechanical and electrical components due to manufacturing defects. This comprises a two-year manufacturer's warranty with unlimited mileage, plus a further 3 years up to a maximum of 90,000 miles (whichever is soonest).

BATTERY WARRANTY

The batteries for battery electric vehicles (BEV) are warranted against all defects in materials and workmanship for eight years or up to 100,000 miles, whichever comes first.

A gradual reduction in battery energy content over time is a normal feature of high voltage battery and does not constitute a warrantable defect. For BEVs, the battery energy content degradation warranty lasts for eight years or up to 100,000 miles, whichever comes first. Where the battery energy content of the high voltage battery

is measured by a CUPRA authorised repairer and is found to be less than 70% during the warranty period, then it will be repaired or replaced under warranty subject to conditions. For full details, please go to the CUPRA UK website.

THREE-YEAR PAINT WARRANTY

The paintwork of all models featured in this price list is covered against manufacturing defects for a period of three years. Naturally, the vehicle must be cared for in compliance with the operating instructions which will be found in your vehicle handbook. Please consult your authorised CUPRA Retailer or repairer for full warranty details.

TWELVE-YEAR BODY PROTECTION WARRANTY

The internal body sections and panels of the models featured in this price list are covered against corrosion originating from internal cavities for twelve years. Naturally, the vehicle must be cared for in compliance with the operating instructions which will be found in your vehicle handbook. Please consult your authorised CUPRA Retailer or repairer for full warranty details.

CUPRA PARTS WARRANTY

CUPRA parts and accessories supplied after new vehicle delivery are covered by our 24 months parts warranty.

CUPRA ROADSIDE ASSISTANCE (INCLUDING EUROPEAN COVER)

Any new CUPRA purchased and registered in the UK from an authorised CUPRA Retailer, is covered free by CUPRA Assistance (including European cover) for roadside repairs or recovery to an authorised repairer for a term of two years. Terms and conditions apply.

SPECIFICATIONS

Specifications refer to Model Year 2024. While CUPRA makes every effort to make sure that specifications are accurate at time of going to press (04/2024), you should always check details with your CUPRA Retailer as there may have been changes in view of CUPRA's policy of continuous product improvement. The right is reserved to change specification and colour at any time. The information in this price list can therefore be given as guidance only.





CUPRA is committed to a policy of continuous product development and reserves the right to make changes to specifications, colours and prices without notice. The information in this brochure can therefore be given as guidance only. While CUPRA makes every effort to ensure that specifications are accurate at the time of publication, you should always check with your authorised CUPRA Retailer for the latest information. Due to limitations of the printing process, the colours reproduced in this brochure may vary slightly from the actual paint colour and material. This vehicle and all its parts, as well as the original spares, were designed according to the Legal Regulations governing the prevention and minimisation of Environmental Impact, through the use of recycled/ recyclable materials, with measures taken to achieve suitable recycling for the conservation and improvement of environmental quality.

Published in the UK, April 2024

12087496_032024

